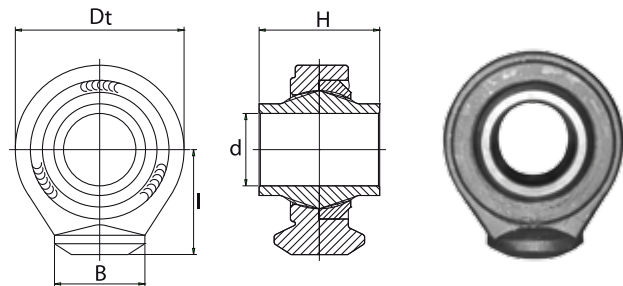


TERMINALE A SNODO SFERICO AD ESTREMITA' ROTONDA
 PER CILINDRI IDRAULICI DA SALDARE
 ACCOPPIAMENTO ACCIAIO SU ACCIAIO
 CORPO IN ACCIAIO C 40 UNI EN 10083-1

*BALL JOINT TERMINAL WITH ROUND END TO BE WELDED
 COUPLING STEEL ON STEEL
 ROD END OF STEEL C 40 UNI EN 10083-1*



SIGLA ARTICLE	CAT.	d (A12)	H (h11)	B (Ø)	Dt	l	Df	Pf	NOTE NOTE	PESO IN Kg. WEIGHT Kg.
SR 10880	-	60 (H7)	100	75	140	87	-	-	BASE SPIANATA-FLAT BASE	5.66